

COTI

Cincinnati
Occupational
Therapy
Institute



camp
Odakota

camp Odakota

Odakota is Sioux for "friend" and Camp OdakOTa is the place to make new friends. Our camp is designed to provide the support needed to help children with sensory processing disorders develop meaningful relationships. Some children avoid sensory input while others crave it. Because the camp was conceived and developed by occupational therapists, the staff of Camp OdakOTa understands this and will be sensitive to your child's particular sensory needs.



What:

Full day camp for children with occupational therapy and sensory integration needs

When:

Two 4-week sessions,
Monday-Friday 9am-4pm

June 15th - July 10th

July 13th - August 7th

Who:

Children ages 6 - 12 years old who would benefit from a sensory sensitive approach to summer day camp.

Where:

Ohio Valley Voices School
6642 Branch Hill-Guinea Pike
Loveland, OH 45140

Cost:

\$1,850 for one 4-week session
\$3,400 for both 4-week sessions

Contact:

Cincinnati Occupational
Therapy Institute
513-791-5688



*sense the
difference*



Why do summer camp with COTI?

COTI is Cincinnati's expert in the area of sensory integration. The camp curriculum has been designed by COTI staff and will anticipate and meet the sensory and environmental needs of our campers to promote their successful participation in summer camp. Children will become a part of a small group of six children with two counselors. They will participate in occupational therapist-led activities throughout each day.



Sample Daily Schedule

Theme of the Week:
The Great Outdoors

Whole Camp Wind Up

Get it, Got it, Good!: **schedule check**

Transition Time

OdakOTA*time: **weaving with nature**

OdakOTA* time: **create a terrarium**

Lunch: **bring your own**

How Does Your Engine Run* **under-
standing your body's regulation**

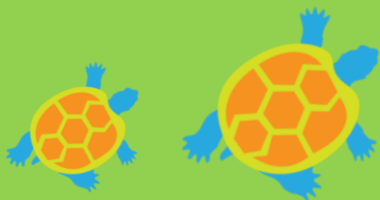
OdakOTA* time: **nature scavenger hunt**

Campativity: **pitching the tent**

Whole Camp Wind Down

*Therapist-led activities include music and movement, arts and crafts, science and nature, games, cooking, and "engine check"





Children with sensory processing disorder have difficulty taking in, interpreting, and responding to sensory input through sight, sound, touch, taste, smell, and movement. These difficulties can affect their ability to form relationships with both peers and adults and can inhibit their ability to participate in many aspects of play. Camp OdakOTa will provide children the opportunity to experience camp life through the support of trained occupational therapy professionals and other staff alongside other children that are experiencing the same challenges. Camp will not be a day of therapy, but rather, a traditional camp experience redesigned with this group of children in mind. We strive to create an environment that will support children with challenges related to sensory processing.



Who is an OdakOTa Kid?

Camp OdakOTa is for children who are 6-12 years old and who have sensory processing disorder or have symptoms of sensory processing disorder due to other conditions. We are unable to provide support for children who require one-on-one supervision. Please call if you have questions about enrollment criteria. Free screenings will be completed for all campers during the spring to ensure that Camp OdakOTa is right for them. If the therapist performing the screening does not recommend camp for your child, your deposit will be returned.

Before and after camp care may be available for an additional fee.

2:1
*staff to camper
ratio*





Registration

To secure a spot for your child, please send a deposit of \$200 by check payable to COTI or by credit card. Priority will be given to campers who register for both 4 week sessions. Those signing up for one session only will be added if space is available after April 15th. Deposits are non-refundable except in the case where there is no space available or, if after a screening at COTI, it is determined that the camp is not a good match for your child. Payments of \$700/session are due on May 1st and June 1st. The balance is due by June 15th for either session.

Sign Me Up!

Child's Name _____

Parent's Name _____

Address _____

Email _____ Phone _____

Session 1 (6/15-7/10)

Session 2 (7/13-8/7)

Sessions 1 & 2 (6/15-8/7)

My child receives: OT PT Speech

My child currently has an IEP. Yes No

My child has a one-on-one aide in school. Yes No

DOB _____ Grade entering in fall _____

T shirt size (circle one): Child S M L Adult S M L

Credit Card: Mastercard Visa Discover

Total Charged: _____ Acct # _____

Exp Date: _____ Verification Code _____

Signature _____

Please mail registration to: COTI, 4440 Carver Woods Dr., Cincinnati, OH 45242 or fax to 513-791-0023